



SP-37.5F

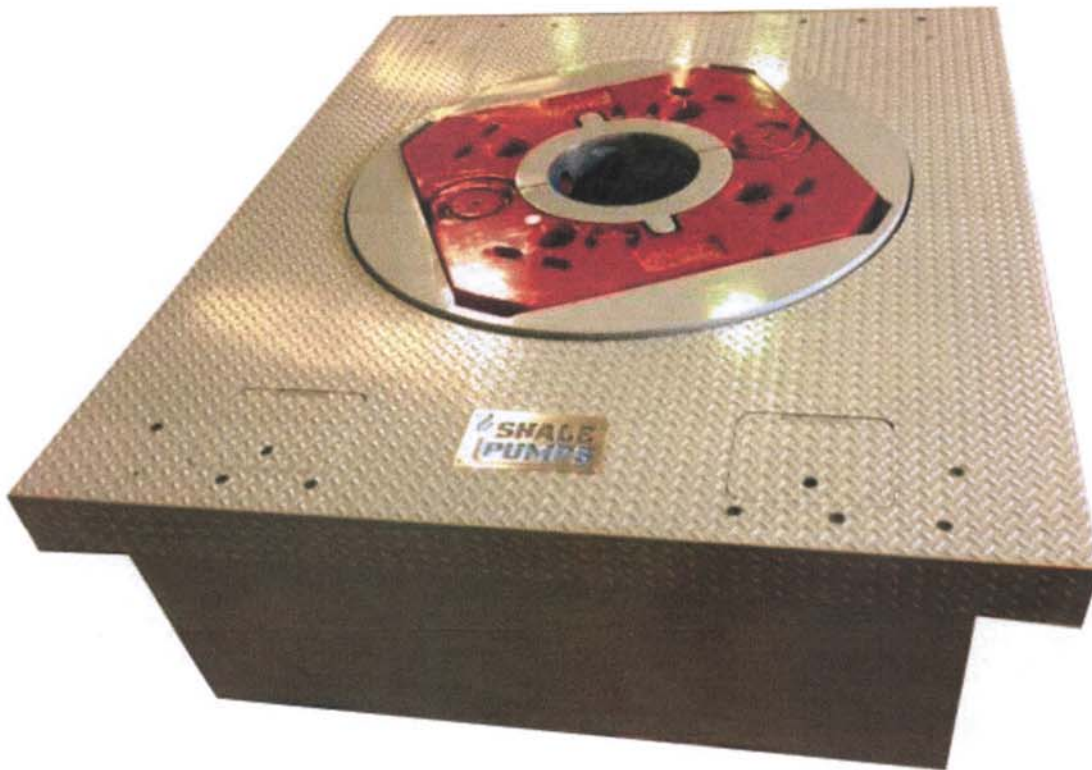
False Rotary Table

Performance Specifications

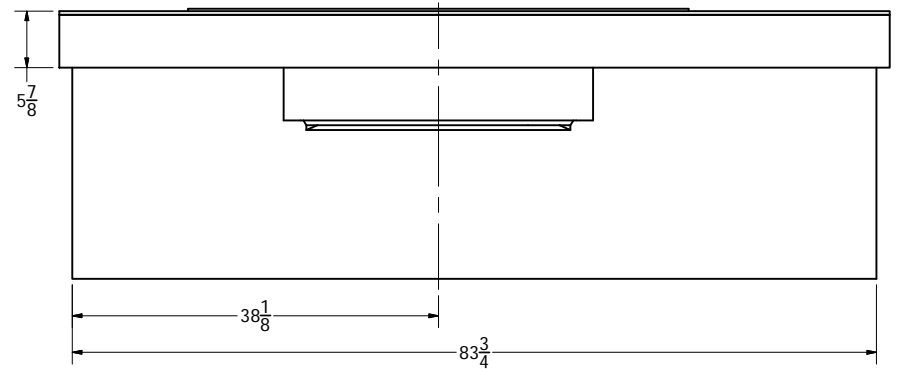
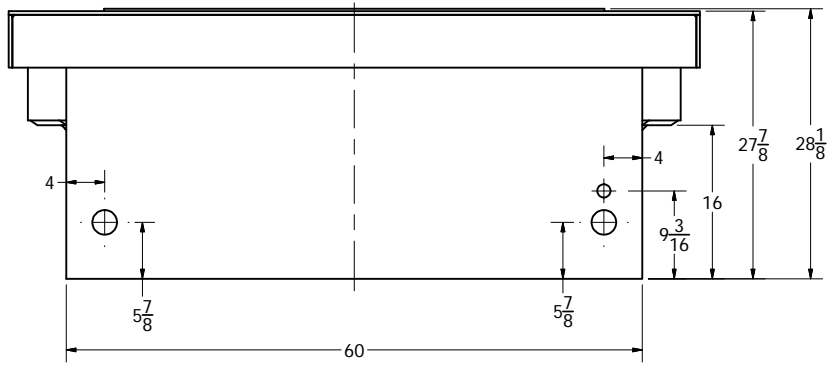
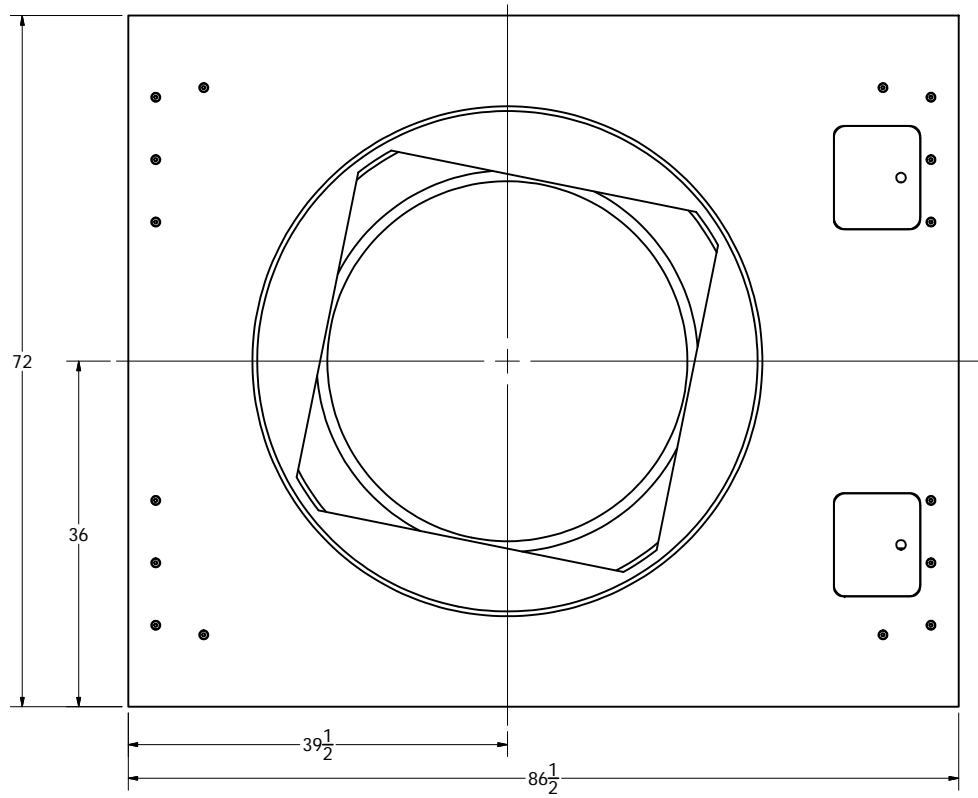
Max Dynamic capacity- 57000 ft./lbs. of torque at 11 RPM

Max speed- 20 RPM

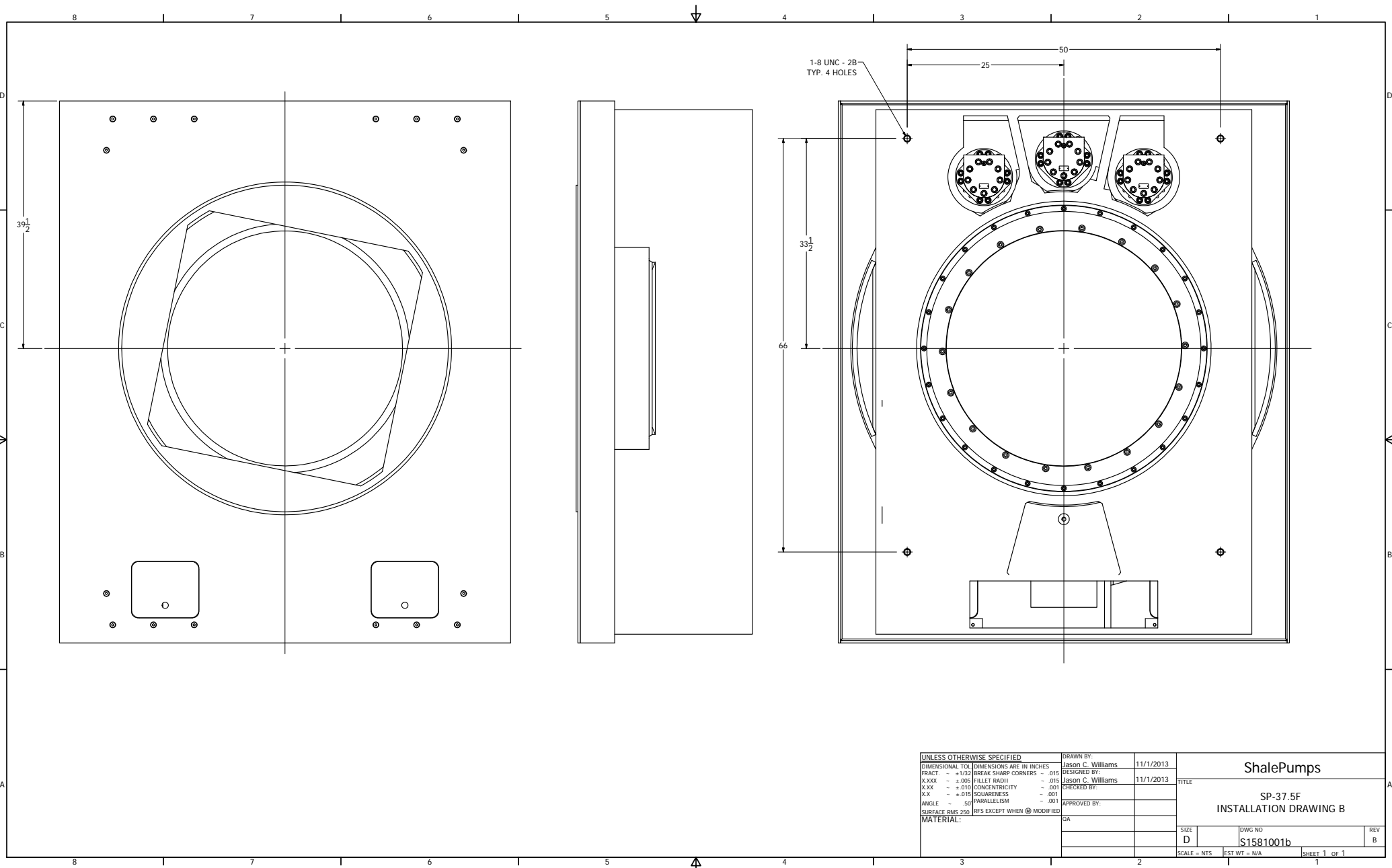
Max static load capacity- 1,300,000 lbs.



NOTES:  
FOR USE WITH OILWELL A-37.5 ROTARY TABLE BUSHING



UNLESS OTHERWISE SPECIFIED		DRAWN BY:	10/22/2013		ShalePumps
DIMENSIONS ARE IN INCHES		Jason C. Williams	11/1/2013		
DIMENSIONAL TOL	±.1/32	BREAK SHARP CORNERS	-.015	DESIGNED BY:	TITLE
FRACT.	±.005	FILLET RADII	-.015	Jason C. Williams	
X.XXX	±.010	CONCENTRICITY	-.001	CHECKED BY:	SP-37.5F FALSE ROTARY TABLE
X.XX	±.015	SQUARENESS	-.001	APPROVED BY:	
X.X	.50	PARALLELISM	-.001	QA	SIZE
ANGLE	RFS EXCEPT WHEN @ MODIFIED				DWG NO
SURFACE RMS 250					S1581001
MATERIAL:					REV
					C
					SCALE = NTS
					SHEET 1 OF 1



UNLESS OTHERWISE SPECIFIED		DRAWN BY:	Jason C. Williams	11/1/2013	TITLE	ShalePumps
DIMENSIONAL TOL. DIMENSIONS ARE IN INCHES		DESIGNED BY:	Jason C. Williams	11/1/2013		
FRACT.	- ±.1/32	BREAK SHARP CORNERS	- .015	CHECKED BY:		SP-37.5F INSTALLATION DRAWING B
X.XXX	- ±.005	FILLET RADI	- .015	APPROVED BY:		
X.XX	- ±.010	CONCENTRICITY	- .001			SIZE
X.X	- ±.015	SQUARENESS	- .001			D
ANGLE	- 50	PARALLELISM	- .001			DWG NO
SURFACE RMS	250	RFS EXCEPT WHEN @ MODIFIED				S1581001b
MATERIAL:						REV
						B
						SCALE = NTS
						EST WT = N/A
						SHEET 1 OF 1