



**SP-500 HIGH PERFORMANCE TRIPLEX
CONTINUOUS DUTY PUMP PERFORMANCE CHART**

SP-500 High Performance 7" Stroke Triplex		Strokes Per Min.	240	220	200	170	140	100	70
		Input HP**	500	458	417	354	292	208	146
Plunger/ Piston Size	Discharge Pressure Rating	Output Gal/Rev	Output – Gallons Per Minute***						
			6 3/4"*	1043	3.253	781	716	651	553
6 1/2"*	1125	3.017	724	664	603	513	422	302	211
6"	1320	2.570	617	565	514	437	360	257	180
5 1/2"	1571	2.160	518	475	432	367	302	216	151
5"	1900	1.785	428	393	357	303	250	176	125
4 1/2"	2346	1.446	347	318	289	246	202	145	101
4"	2969	1.142	274	251	228	194	160	114	80
3 1/2"	3878	0.875	210	192	175	149	122	87	61
3"	5000*	0.643	154	141	129	109	90	64	45

* REQUIRES A SPECIAL WEARPLATE; ** BASED ON 95% MECHANICAL EFFICIENCY, ***BASED ON 100% VOLUMETRIC EFFICIENCY
ShalePumps LLC ALL ROLLER BEARING PUMP DESIGN HAS PROVEN TO BE GREATER THEN 98% MECHANICALLY EFFICIENT AT SPEED

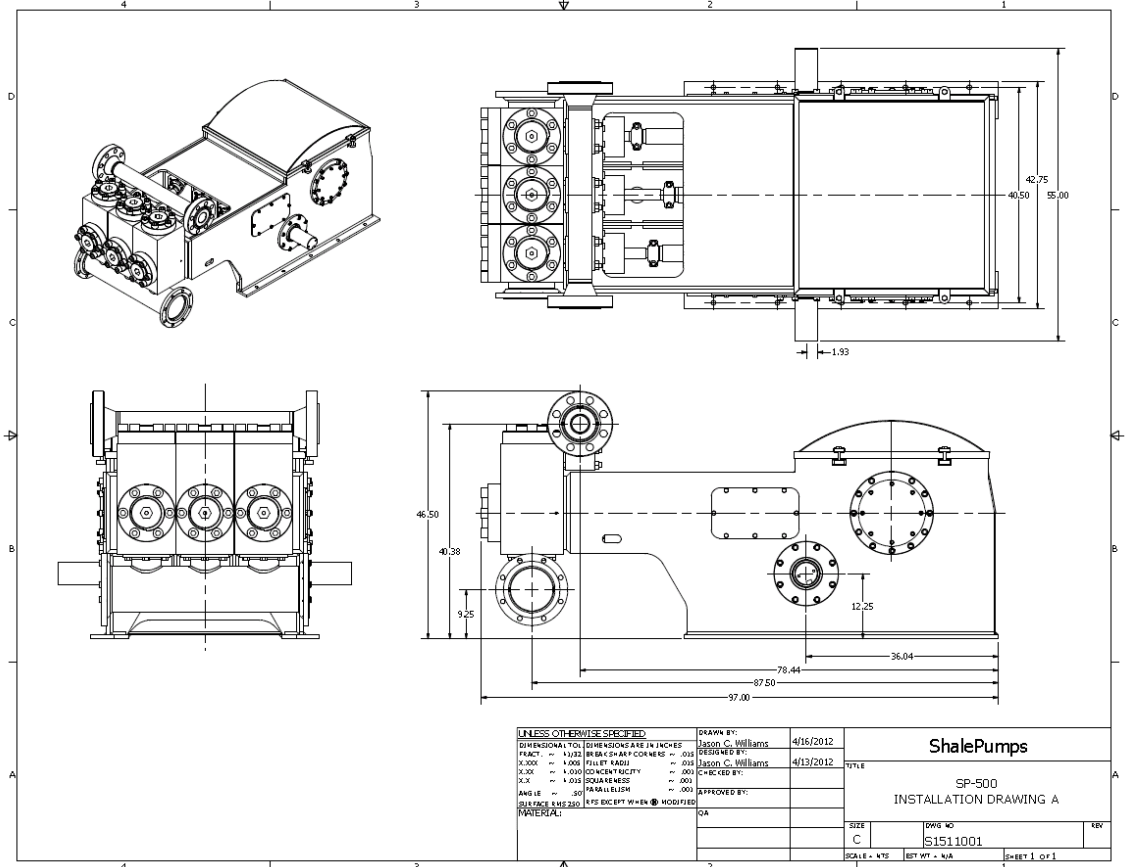
Features

- MINIMUM WEIGHT/MAXIMUM PERFORMANCE WITH CONTINUOUS DUTY LIFE EXPECTANCY
- HIGH PERFORMANCE STEEL FABRICATED POWER END WITH STEEL HERRINGBONE GEARS
- LOW PINION SHAFT DESIGN WITH HYDROSTATIC INTERNAL LUBRICATION SYSTEM
- ANTI-FRICTION ROLLER BEARINGS THROUGHOUT
- FORGED STEEL ECCENTRIC CRANKSHAFT
- DOUBLE (REDUNDANT) FAILSAFE INTERNAL LUBE SYSTEM
- METAL TO METAL LINER LOCK
- HIGH CAPACITY LINER WASH SYSTEM

Classification

General Duty

INPUT HORSEPOWER RATING.....	500
PUMP SPEED.....	240
STROKE LENGTH.....	7"
MAXIMUM PISTON SIZE.....	6 3/4"
FLUID END WORKING PRESSURE RATING.....	5000 PSI
DISCHARGE CONNECTION SIZE.....	4" FLANGE
SUCTION CONNECTION SIZE.....	6" FLANGE
VALVE SIZE.....	API 5
PISTON ROD END.....	SA-4/SA-2
CRANKCASE OIL CAPACITY.....	40
LINERWASH CAPACITY.....	40
PUMP WEIGHT COMPLETE, LESS SKID.....	9,750 LBS
STANDARD GEAR RATIO.....	5.210/1
OPTIONAL GEAR RATIO.....	4.363/1
DRIVE SHAFT DIA.....	4 1/4"



UNLESS OTHERWISE SPECIFIED		DRAWN BY:	Jason C. Williams	4/16/2012	ShalePumps
DIMENSIONAL TOLERANCES ARE IN INCHES		DESIGNED BY:	Jason C. Williams	4/13/2012	
FRACT. ~ .002	IRREG. CHAMF. CORNERS ~ .010	CHECKED BY:	Jason C. Williams		SP-500
R. SURF. ~ .006	FILLET RADIUS ~ .010	APPROVED BY:			INSTALLATION DRAWING A
D. SURF. ~ .010	CONCENTRICITY ~ .003				SIZE
SURF. ~ .010	SQUARENESS ~ .003				C
ANGLE ~ .50	PARALLELISM ~ .003				DWG NO
PLACEMENT & HIDE 2ND	WTS EXCEPT W=EN & MODIFIED				S1511001
MATERIAL:		QA			SCALE - NTS
					EST WT - N/A
					SHEET 1 OF 1